



SAINT JAMES AME CHURCH JOURNEY TO

South Africa and Lesotho

AUGUST 2-11, 2027

SAINT JAMES AME CHURCH JOURNEY TO *South Africa* AND LESOTHO 2027

YOUR JOURNEY AT-A-GLANCE

DAY 1 | MON, AUG 2

- United Airlines/EWR-Direct

DAY 2 | TUE, AUG 3

- Arrive in Johannesburg
- Hotel Check-in Garden Court-Sandton; or X Sandton
- Welcome Dinner/Event ✓

DAY 3 | WED, AUG 4

- Lesedi Cultural Village w/ Dinner ✓

DAY 4 | THUR, AUG 5

- Depart Johannesburg for Lesotho
- Arrive in Maseru, Lesotho
- Check-in Hotel - Avani Maseru Hotel
- Dinner

DAY 5 | FRI, AUG 6

- Drive to Khoro Ea Thuto AME Primary School from Maseru
- School Expansion Dedication Program w/ Lunch ✓
- Return to Hotel
- Lesotho Cultural Program & Dinner

DAY 6 | SAT, AUG 7

- Depart for Johannesburg from Lesotho
- Return & Re-Check-in to the Hotel
- Rest and Relaxation
- Dinner ●

DAY 7 | SUN, AUG 8

- Worship Service with AME Connectional Lay Organization 40th Biennial-Sandton Convention Center
- Optional Activities - Afternoon

DAY 8 | MON, AUG 9

- Pilanesburg Safari w/ Lunch ✓

DAY 9 | TUE, AUG 10

- Apartheid Museum and Visit to Soweto
- Lunch ✓
- Farewell Event TBD

DAY 10 | WED, AUG. 11

- Final day of 40th Biennial-Sandton
- Depart for US (late departure) or Other Post Optional Activities
 - Cape Town
 - Victoria Falls
 - Kruger National Park
 - Durban

✓ INCLUDED

● NOT INCLUDED; ON OWN ACCOUNT



TRAVEL JOURNEY CURATED BY GLOBAL LINKAGES





To My Saint James Family and Friends:

I greet you in the name of our Lord and Savior Jesus Christ.

You have often heard me say that Saint James is the greatest church on the planet! Now we are on the brink of showing our greatness and faith in action to another part of the world.

In August 2027, under the leadership of Global Linkages, a premier travel provider, Saint James AME Church will travel to South Africa and Lesotho. Lorna K. Johnson, owner of Global Linkages, is a member of Saint James and has extensive experience working in this part of the world, making this alliance even more powerful.

Our core reason for going to Lesotho is to witness in person an addition to the Khoro Ea Thuto AME Primary School. Saint James is financing this addition, and I want you to be able to see firsthand what an impact we will make in the lives of teachers, students and the community. You will also see your tithe and offerings at work.

Our trip will also coincide with the Connectional AME Church Lay Organization 40th Biennial Convention. This will be the first time the convention is held on the continent. You will have an opportunity to observe and participate in the Convention, if you should choose to do so. Curated shopping experiences and cultural tours have been set up for you as well during the trip, and you can extend your trip by visiting some of South Africa's premier destinations.

What has been outlined above is only a small part of the reason you should consider making this trip of a lifetime with us. Even those who cannot travel will be able to support the school with donations and supplies which we will take with us. We will explain this fully to you in coming months.

We have an affordable monthly payment plan that we hope you will take advantage of. Open your eyes, minds and hearts to all that our Motherland has to offer on this trip. It'll be one of the hallmark moments of my ministry to accompany you along with my family on this journey to South Africa and Lesotho.

As always, I remain. God's humble servant,

Rev. Dr. Ronald L. Slaughter

Rev. Dr. Ronald L. Slaughter, Senior Pastor



DAY 1 | MON, AUG 2

- Depart direct from Newark, NJ (EWR) to Johannesburg, South Africa via United Airlines (Add-On USA City Options available)

DAY 2 | TUE, AUG 3

- Arrive in Johannesburg/Hotel Check-In Garden Court-Sandton; or X Sandton
- Welcome Dinner Event ✓

The Center of South Africa

WELCOME TO JOHANNESBURG



Johannesburg is South Africa's most populous city, its provincial capital, with about 5.6 million people. Founded in 1886, following the discovery of gold, it became known as "The Place of Gold". Today, Johannesburg is viewed as a mix of big-city culture, shopping, dining and nightlife with outdoor adventures, up-close wildlife encounters and visits to historical sites. You can explore caves and nature reserves, or visit a traditional village by day, then enjoy dinner at a hip cafe or five-star restaurant. Shop the culture's most unique products and souvenirs at charming open-air markets, modern gallerias and boutiques. There's truly something for everyone.

Your Stay

GARDEN COURT SANDTON CITY HOTEL



Just moments from Sandton's famous mall, adjacent to Nelson Mandela Square, and a 2-minute walk from the Sandton Convention Centre, the Garden Court Sandton City hotel combines affordable rates and award-winning service in an ideal city-centre location. Make yourself at home in one of 444 modern and relaxed en-suite rooms with air-conditioning, uncapped WiFi, DSTv, city or garden views, a space to work, and a choice of queen or two double beds. Breakfast is included in room rates, and family travel is made extra affordable with two kids under 18 staying for free when sharing with adults. The hotel's big garden is a green space of calm in the city and the pool and gym make it easy to relax or keep your fitness routine. The popular Riffs Bar and Grill serves up a delicious gourmet pub-style menu in a laid-back and lively setting. Two small conference rooms can host meetings for up to 16 and self-service workstations will help you stay productive.

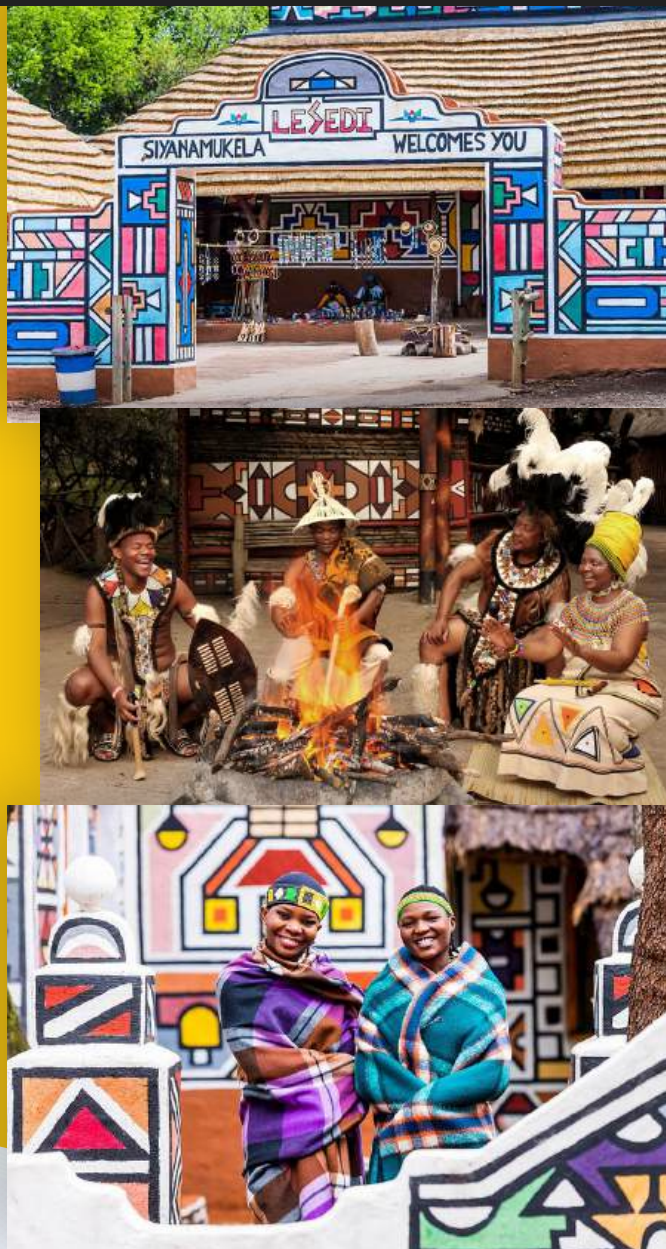
DAY 3 | WED, AUG 4

- Breakfast at Hotel
- Lesedi Cultural Village w/ Dinner ✓

DAY 4 | THUR, AUG 5

- Breakfast at Hotel
- Depart for Moshoe shoe International Airport (MSU)
- Arrive in Maseru, Lesotho
- Check-in Hotel – Avani Maseru Hotel
- Dinner

LESEDI CULTURAL VILLAGE



Lesedi Cultural Village, located in Lanseira, Gauteng has been created to give visitors a view of traditional life by five ethnic groups in South Africa: the Zulus, Xhosas, Basothos, Ndebeles and Pedis. You will enjoy a guided tour through each of the five homesteads where you will explore and learn about each culture. The village has an expansive craft market, where you will have an opportunity to explore and shop beaded items made on site, wood carvings and other artwork. The decorative walls and courtyard provide an authentic environment in the midst of a natural setting. The experience ends with a Traditional Dance Boma for the Giant Ingoma with songs and dances from all five villages. A traditional South African dinner is served in the Nyama Choma Restaurant with delicacies from across the country.

Exploring Lesotho



Lesotho, officially known as the Kingdom of the Sky, is a landlocked country in Southern Africa, entirely surrounded by South Africa. Situated in the Maloti Mountains, it is known for its mountainous terrain and is the only country in the world entirely above 1,000 meters in elevation. Its capital is Maseru, its currency is the Loti, and the official languages of the "Basotho people" are Sesotho and English.



Your Stay

AVANI MASERU HOTEL



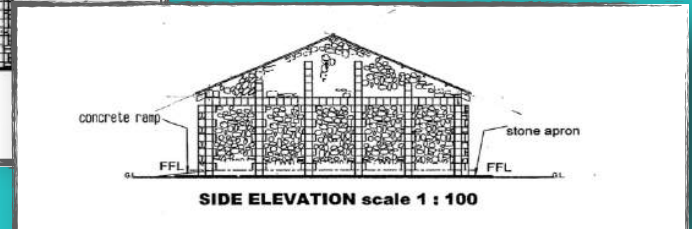
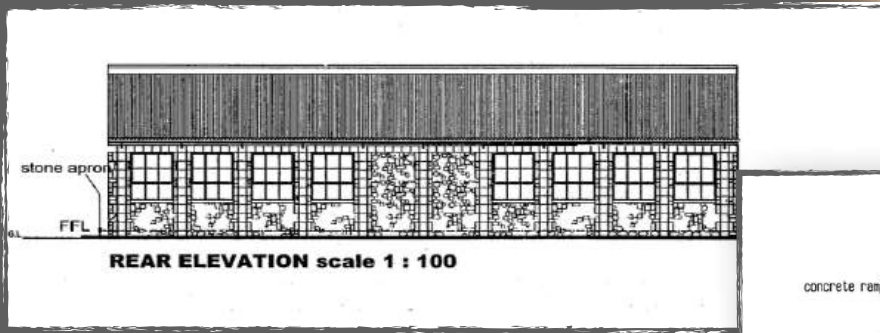
Located in the centre of Maseru, along the Caledon River, Avani Maseru Hotel offers a large outdoor swimming pool, sauna and a thatched pool bar. The Pioneer Shopping Mall is 600 metres away. Decorated in warm colours, the air-conditioned rooms are fitted with a flat-screen satellite TV, safe and seating area. Each room includes tea-and-coffee-making facilities. Some rooms offer a view of the pool.

DAY 5 | FRI, AUG 6

- Breakfast at Hotel
- Dedication of the Khoro EA Thuto AME Primary School, Mochales Hoek, Lesotho
- Lunch ✓

DAY 6 | SAT, AUG 7

- Breakfast at Hotel
- Depart for Maseru Return Flight to Johannesburg
- Return & Re-Check-in Garden Court Hotel
- Rest and Relaxation
- Dinner ●



The Dedication

THE KHORO EA THUTO AME PRIMARY SCHOOL

Saint James AME is pleased to be a supporter of the AME 18th Episcopal District Khoro EA Thuto AME Primary School located in Mochales Hoek. The school expansion includes the addition of three classrooms; currently only one exists. Participants are invited to join Bishop Jeffrey B. Cooper, Sr. and Pastor Ronald L. Slaughter in the Dedication Ceremony for the expansion of the school. Congregants from local AME Churches, the school children, elected officials and other invited guests will be part of the ceremony.

DAY 7 | SUN, AUG 8

- Breakfast at Hotel
- Participation in the African Methodist Episcopal Connectional Lay Organization 40th Biennial at Santon Convention Center (2 minute walk from hotel)
- Optional Activities - Afternoon



AME Connectional Lay Organization

The mission of the AME Connectional Lay Organization is to teach, support, and empower the AME laity so that they may maximize their abilities to serve the Kingdom of God. The Biennial Conference is held every two years as a means to educate and train lay members in the principles and history of African Methodism, fostering loyalty to church authority, financial support for church programs, and active participation in all church functions. The 40th Biennial is being held in Johannesburg, South Africa. This will be the first time, the Biennial Conference is held outside of the United States.

Participants are encouraged to attend the Opening Worship Service or participate in Optional Activities.

DAY 8 | MON, AUG 9

- Breakfast at Hotel
- Pilanesberg Safari w/Lunch ✓

DAY 9 | TUE, AUG 10

- Breakfast at Hotel
- Apartheid Museum & Soweto Visit w/ Lunch ✓
- Farewell to South Africa Event TBD

PILANESBERG GAME SAFARI



A day amongst the wild at Pilanesberg Game Park is a chance to witness some of South Africa's most majestic animals, known as the Big Five. Take plenty of photos and selfies while admiring the "Pilanesberg Alkaline Ring Complex", a three concentric ridges (or rings of hills), and the park's most unique geological feature. Lunch will be at Bakubung Game Reserve, located on site.

APARTHEID MUSEUM



The Apartheid Museum opened in 2001, and is the world's pre-eminent museum on 20th century South Africa, at the heart of which is the apartheid story. The museum -- the first of its kind -- illustrates the rise and fall of apartheid. An architectural consortium, comprising several leading architectural firms, conceptualized the design of the building on a seven-hectare stand. The museum is a superb example of design, space and landscape offering the international community a unique South African experience.

Explore Soweto!

Soweto is the most populous Black residential area in South Africa. Soweto was home to Nelson Mandela for many years and is now the center of cultural development and black empowerment in South Africa. On your Tour of Soweto, you'll learn about Freedom Square, which is where The Freedom Charter was discussed and signed in 1956, and the location of Hector Pieterse Memorial Square, which is named for the young schoolboy who was the first to die from gunshots during the June 1976 uprising.



DAY 10 | **WED, AUG 11**

- Breakfast at Hotel
- Final day of 40th Biennial-Sandton

- Depart for US or Other Post Optional Activities
- United Airlines leaves late for the US
- Cape Town, South Africa
- Victoria Falls, Zimbabwe & Zambia
- Kruger National Park (Safari)
- Durban, South Africa



Global Linkages, founded in 1997 and based in the NJ-NYC metropolitan area, is a management consulting firm that specializes in developing partnerships with the African continent and the diaspora. As part of its services, Global Linkages provides “boutique travel experiences” that connect individuals, educational institutions, governments and businesses with unique and exciting explorations in Africa. This is primarily due to those extensive relationships created by the firm’s international development work. Global Linkages Principal, Lorna K. Johnson, trained as a lawyer and urban planner, has been working in Africa for over 30 years and has made over 300 trips to the continent. In 2017, Global Linkages expanded its journeys and development work to Cuba; and began traveling to Morocco in 2019, East Africa in 2022, and recently completed its inaugural journey to Brazil in 2025.

SAINT JAMES AME CHURCH JOURNEY TO

South Africa

AND LESOTHO 2027

TRIP INFORMATION PAGE

TRIP COST

ADULT \$6,700 | SINGLE SUPPLEMENT \$650

Reduced Cost for Children under the age of 13 years

HOTELS

- ✓ Garden Court Sandton City Hotel - 4 stars
- ✓ Avani Maseru Hotel - 4 stars

MEALS

- ✓ Full breakfast daily included
- ✓ Other meals included as noted

TOURS

- ✓ All group tours are included

YOUR JOURNEY'S INCLUSIONS

- ✓ Roundtrip Airfare from Newark Liberty International Airport (EWR) Direct to OR Tambo International Airport, Johannesburg, South Africa (Economy)
- ✓ Roundtrip Airfare Direct from Johannesburg, South Africa to Maseru, Lesotho (Economy)
- ✓ Hotel accommodations
- ✓ Daily Breakfast at Hotels
- ✓ Lunches and dinners where indicated
- ✓ All group tours
- ✓ Group Personal Guides
- ✓ Customized Events and Excursions
- ✓ Ground Transportation in Johannesburg & Cape Town
- ✓ Welcome Packages & Zoom Call Orientations

PAYMENT INFORMATION

A minimum deposit payment of \$500 for adults and \$250 for children under 13 is required. Payments of \$350 or more can be paid monthly per the Suggested Payment & Deadline plan included with this package.

Trip must be paid in full by or before June 1, 2027.

CONTACT INFORMATION

Saint James Church Office Manager
SJAMECjourneytoSouthAfrica@gmail.com | 973.622.1344 Ext. 124

Dr. Edith Churchman, Chair
Saint James AME Planning Committee
churchmanedith@gmail.com | 973.202.5026

Lorna K Johnson, Tour Curator
Global Linkages
lkjglobalink@gmail.com | 973.819.6484



SAINT JAMES AME CHURCH JOURNEY TO

South Africa

AND LESOTHO 2027

RESERVATION FORM

DEPOSIT REQUIRED: \$500 ADULTS / \$250 CHILDREN

Use this form to register and reserve your spot for the
Saint James AME Church Journey to South Africa & Lesotho 2027.

Name _____

Address _____

City _____ State _____ Zip _____

Phone _____ Email _____

Child 13 Years of Age or Younger: Yes _____ No _____

I would like the following accommodations (Check one): _____ Single _____ Double

If double, my roommate will be _____

Do You Have a Passport? Yes _____ No _____

(If yes, please include a copy with your registration package.)

Method of Payment

____ **Check or Money Order** | Payable to Global Linkages

____ **Credit Card** | 5% transaction fee will be added

_____ - _____ - _____ - _____ Expiration date _____/_____/_____

Signature _____

This card is a _____ MasterCard _____ Visa _____ American Express _____ Discover (check one)

____ **Paypal Email:** lkjglobalink@aol.com (Be sure to indicate "Friends & Family" to avoid a transaction fee)

____ **Zelle Email:** lkjglobalink@aol.com

Send payments and form to:

Global Linkages, Inc.

320 South Harrison Street Suite 16H

East Orange, NJ 07018

Email: lkjglobalink@gmail.com **Phone:** 973-819 6484



GLOBAL LINKAGES



SAINT JAMES AME CHURCH JOURNEY TO
South Africa
AND LESOTHO 2027

PAYMENT SCHEDULE AND REFUND POLICY

After paying a minimum deposit of \$500 for adults/ \$250 for children under 13, payments of \$350 or more will be accepted for those who prefer to pay in installments. Please see the suggested payment plan for additional information and deadlines.

- Global Linkages accepts checks, money orders, major credit cards (Visa/Mastercard/American Express/Discover) and electronic payments including Zelle and PayPal.
- Please make all checks and money orders payable to Global Linkages, Inc.
- A returned check fee of \$40 will be charged for all returned checks.
- All credit card transactions incur a 5% transaction fee.
- Transmit Paypal and Zelle payments to lkjglobalink@aol.com.
- If paying by PayPal, be sure to check the Friends and Family box to avoid being assessed a transaction fee.
- All final payments must be received by Global Linkages no later than June 1, 2027. Trip participants with outstanding balances after this date will incur a penalty equivalent to 10% of the balance due.

REFUNDS:

< November 30, 2025	Deposit
December 1, 2025 - February 28, 2026	Payment minus \$100
March 1, 2026 - May 31, 2026	Payment minus \$500
June 1, 2026 - August 31, 2026	Payment minus \$750
September 1, 2026 - December 31, 2026	Payment minus \$1,000
January 1, 2027 - March 31, 2027	Payment minus \$2,000
April 1, 2027 - May 31, 2027	Payment minus \$3,000
June 1, 2027 - Trip Departure	NO REFUNDS



INSURANCE | Participants are strongly encouraged to purchase Travel Insurance. You can purchase TravelGuard (AIG) insurance through Global Linkages' travel agent, or you are welcomed to purchase travel insurance from a provider of your choice.



GLOBAL LINKAGES

